



EASTWEST

MIDI GUITAR INSTRUMENTS

HOW TO INSTALL THE MIDI GUITAR INSTRUMENTS SERIES AND TRIPLEPLAY (WIN)

Please follow these installation instructions carefully! It's very important to install the Fishman TriplePlay system before the MIDI Guitar Instrument Series in order to successfully install this product.

REGISTER AND INSTALL THE FISHMAN TRIPLEPLAY SYSTEM

Visit the [Fishman TriplePlay website](#) and follow the steps below to register a new account, login and download the TriplePlay installer.

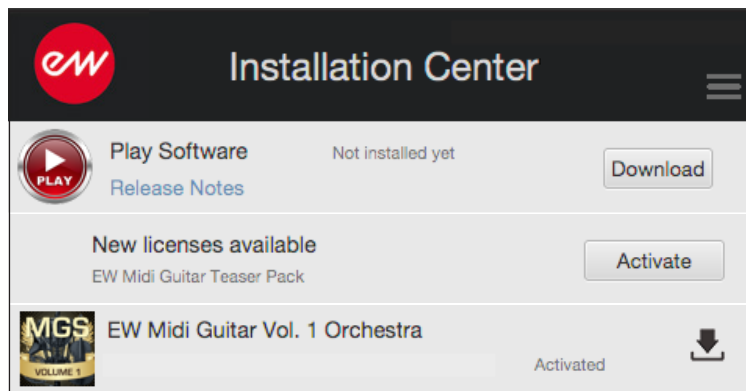


- 1 Click the [Register](#) button when you arrive at the Fishman TriplePlay website, then enter your account information into the required fields, including the Triplay Serial Number and Software Registration Code. Once completed, click 'Register Account'.
- 2 After registering your account, click the [TriplePlay Login](#) button and login with your TriplePlay username and password.
- 3 Click on the [Download](#) button and locate the TriplePlay software installer, then download and install the software to complete the installation. For additional help, see the [Support Materials](#) section to view the TriplePlay Software Install Guide.

INSTALL AND ACTIVATE THE MIDI GUITAR INSTRUMENTS SERIES

Visit the [EastWest Support Center](#) and follow the steps below to download the Installation Center, the application that handles the download, installation and activation of the MIDI Guitar Instruments Series.

- 4 Click on [Software & Product Updates](#) when you arrive at the EastWest Support Center website, then locate the EastWest Installation Center installer and download it. The installer will launch automatically once the download is complete. Proceed through the installer prompts to install the software, which will launch automatically once complete.
- ! **IMPORTANT!** If the Installation Center is already installed, simply login (step 5) and click the [Download](#) button in the Installation Center product panel, which appears near the top of the Installation Center, to install the latest version.
- 5 Login to the Installation Center with the EastWest username and password you created during the Registration process at [Soundsonline.com](#). This may take a moment while the Installation Center gathers data about your account.



- 6 Near the top of the Installation Center, click the Download button next to the Play 5 software panel. Once downloaded, the installer will launch automatically. Proceed through the prompts to install the Play 5 software.
- ! **IMPORTANT!** We do not recommend changing the default installation path for the Play VST plugin (C:/Program Files/VSTplugins), unless you know what you're doing!
- 7 Near the top of the Installation Center, click the Activate button in the New Licenses Available panel to enter the Activation Assistant. In the 'License' section select the EW MIDI Guitar Instruments Series products and click 'Next'. In the 'Location' section select a location to activate the product. Unless you have the optional iLok key, the location will be your computer.
- 8 Before you begin to download a EW MIDI Guitar Instruments Series product, create a folder named 'Play Libraries' at the location on your drive where you wish to install the library content.
- 9 Find the EW MIDI Guitar Instruments Series product panel in the Installation Center and click the Download icon to the right (a downward arrow). When prompted to 'Set Library Path' choose the 'Play Libraries' folder you created in the previous step.
- ! **IMPORTANT!** Ensure that you have enough hard drive space available at the desired location. The size of the MIDI Guitar Instrument Series products are displayed just below the download icon in the product panel (the downward arrow).

IF YOU NEED FURTHER ASSISTANCE

If you encounter any trouble, please visit the [EastWest Support Center](#) to:

- View FAQs to resolve common issues
 - View video tutorials, user manuals and quick start guides
 - Submit a support ticket (please allow 24-48 hours for response).
-



EASTWEST

MIDI GUITAR INSTRUMENTS

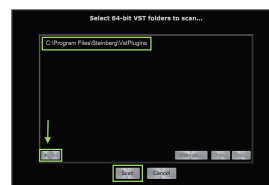
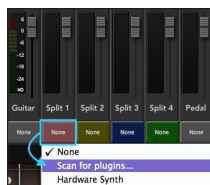
HOW TO SETUP THE MIDI GUITAR INSTRUMENT SERIES WITH TRIPLEPLAY (WIN)

SETUP

- 1 Launch the TriplePlay application from here: C:/ Program Files / TriplePlay

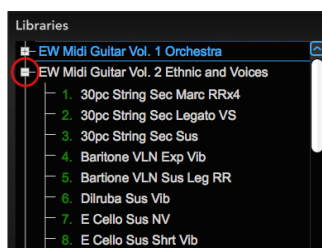
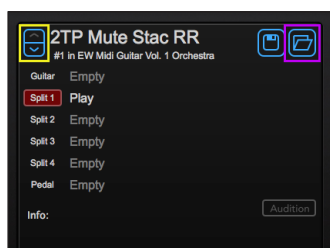
Now scan the Play_VST_x64 plugin in TriplePlay by clicking and holding in the Split Sound Selection button (where “None” is displayed) and selecting the ‘Scan for plugins...’ option. In the resulting window, click the ‘Scan for plugins’ button, then use the “+” button to add the default plugin directory for the Play_VST_x64, which is C://Program Files/VSTplugins. If you installed the Play_VST_x64 in a custom location, choose that location when adding the plugin directory. Once you’ve chosen the VST plugin path(s), click the ‘Scan’ button.

2



3

Click the ‘Open Patches Window’ button to open the Patches Window (highlighted in purple).



4

In the Patches Window, click the ‘+ / -’ buttons (highlighted in red) to open the contents of the EW MIDI Guitar Instruments Series presets in the ‘Libraries’ column and click on a patch name to load it.

5

Close the Patches Window, to view the opened patch in the Main Window and use the up / down arrows to cycle through the presets (highlighted in yellow).

!

Please see Chapter 2: Getting Started from the [MIDI Guitar Instrument Series Manual](#) for details on how to load instruments from any PLAY Library into the TriplePlay software.