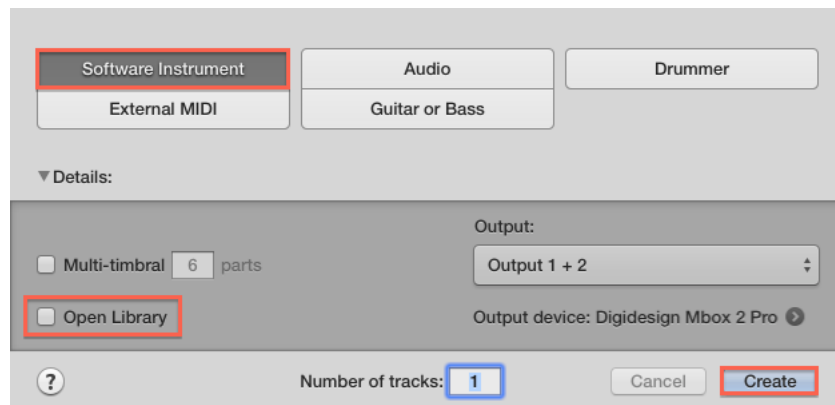


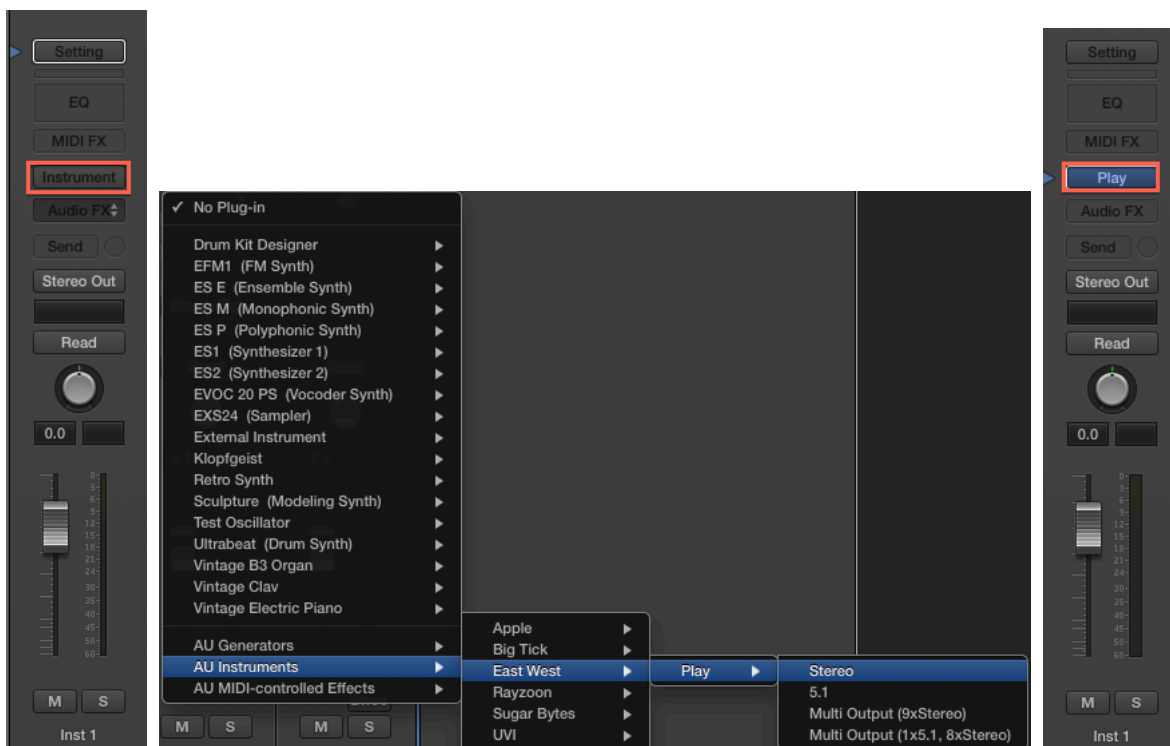
USING PLAY IN APPLE LOGIC X

1. Once Logic X has opened, a window will appear asking you to create a track of your choosing. Click on 'Software Instrument' in the top-left, and make sure that 'Open Library' is not selected, then click 'Create'.

Please note! If you would like to create a multi-timbral instrument setup, see below.



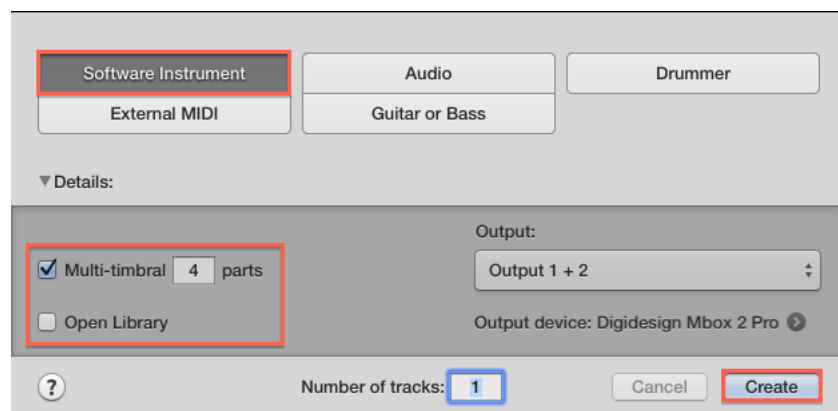
2. In the channel strip, click in the 'Instrument' menu and navigate to the PLAY plugin. Once loaded, it will appear in the channel strip. Click on PLAY plug-in to show / hide the PLAY interface.



3. You're now ready to load your first instrument and begin composing. Please continue with the steps below if you would like to use Play as a multi-timbral instrument (that is, loading multiple instruments within one instance of the Play plugin).

USING PLAY IN APPLE LOGIC X (MULTI-TIMBRAL)

4. Once Logic X has opened, a window will appear asking you to create a track of your choosing. Click on 'Software Instrument' in the top-left, then click the 'Multi-Timbral' check-mark box and define the number of parts (up to 16 midi channels are available per midi port). Next, make sure that 'Open Library' is not selected, then click 'Create'.



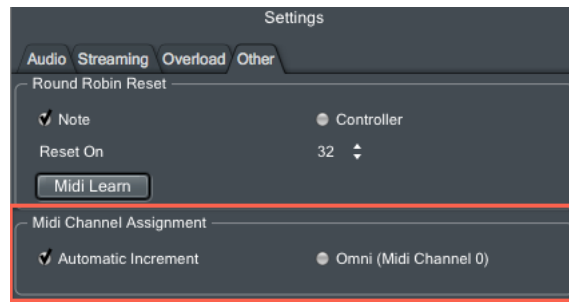
5. You will now see (x) number of instrument tracks appear, according to the number of parts you chose to create. Each instrument track is assigned to its own MIDI channel (1, 2, 3, etc). These will correspond to the MIDI channels assigned to instruments loaded in PLAY.



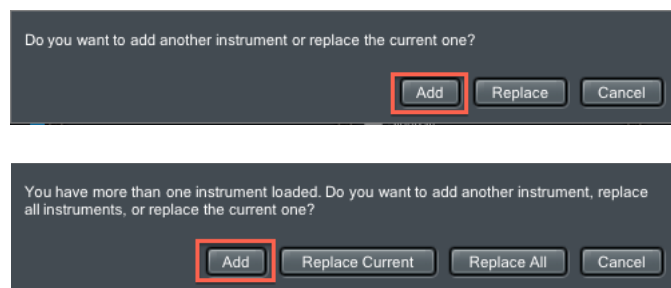
6. In the channel strip, click in the 'Instrument' menu and navigate to the PLAY plugin (see screen shots in Step 2 above). Once loaded, it will appear in the channel strip as PLAY. Click on this button to show / hide the PLAY interface.

Please note! Only one instance of PLAY is needed per multi-timbral software instrument.

7. Click on the Settings menu near the top of the PLAY interface and then navigate to the Other tab. Here, under MIDI Channel Assignment, select Auto Increment. This will assign each new instrument loaded in PLAY to the next MIDI channel (1, 2, 3, etc), corresponding to the assignments in Logic's multi-timbral instrument setup.



8. Now begin loading instruments into PLAY. Choose 'Add' in the following prompts to load multiple instruments into PLAY.



9. You can see what you currently have loaded by looking in PLAY's Instrument List. The MIDI channel assignment is in parenthesis next to the instrument name.



10. Now, each instrument you have loaded into PLAY will correspond with the midi channels in Logic. You can now record enable the specified track in Logic and and play the corresponding instrument loaded into PLAY.